



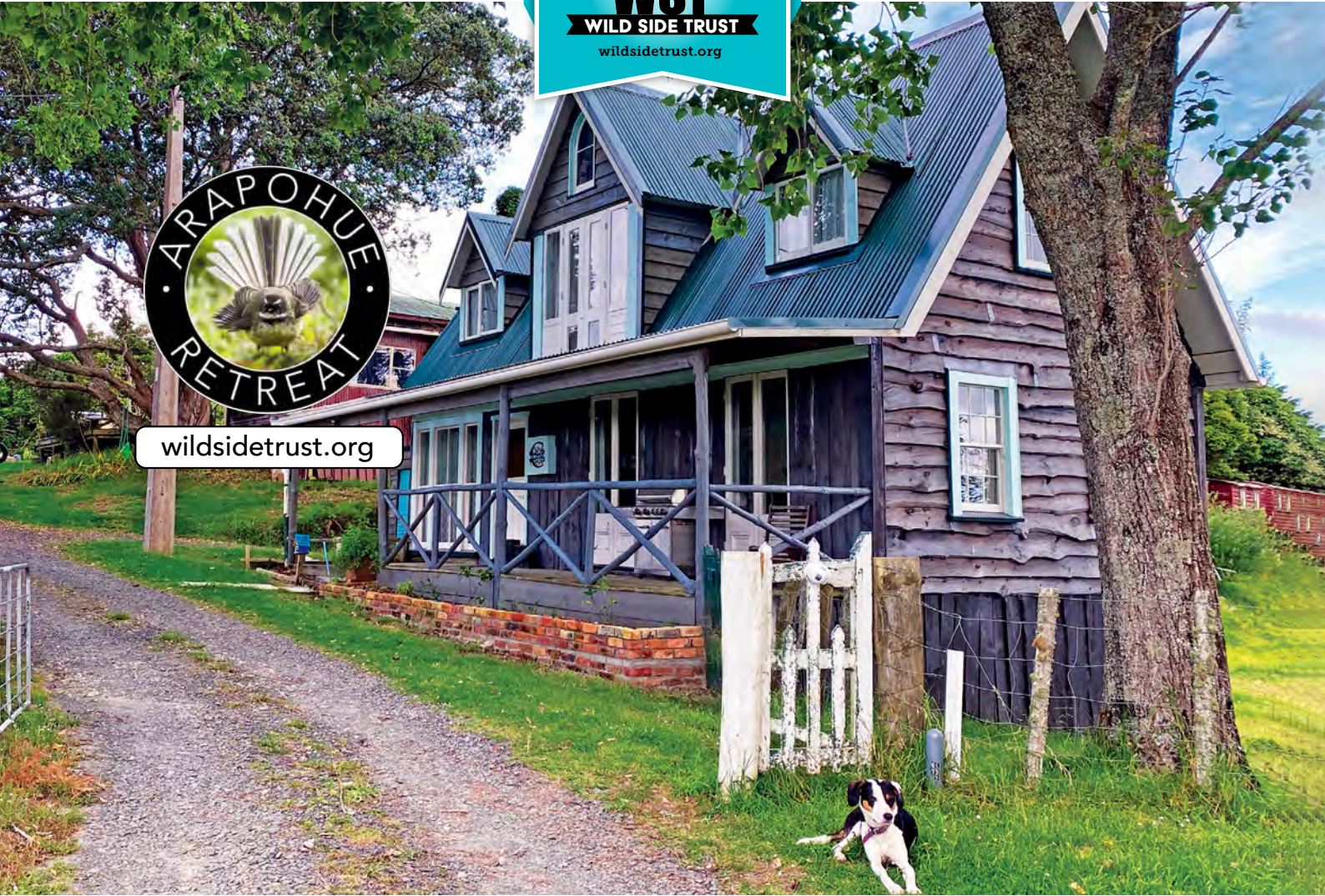
WST

WILD SIDE TRUST

wildsidetrust.org



wildsidetrust.org



ARAPOHUE RETREAT

Vision & Partnership Opportunities



Wild Side Charitable Trust Registration No. CC55065

NOV 2023



09 439 5717
027 254 6778



574 Hoyle Rd
RD4 Dargaville 0374



wildsidetrust.org
ray@thewildside.net



CONTENTS

Executive Summary : The urgent need	3
Who We Are and How You Can Help	4
Urgent Funding Opportunities	5
How We Are Different	6
How to donate	7
Appendices : Endorsements	8

Wild Side Charitable Trust Registration No. CC55065



09 439 5717
027 254 6778



574 Hoyle Rd
RD4 Dargaville 0374



wildsidetrust.org
ray@thewildside.net

EXECUTIVE SUMMARY: THE URGENT NEED

Wild Side Charitable Trust (WST) purchased the Arapohue Bush Camp... 22-acres of land with buildings and native bush located 16km south-east of Dargaville — 58km west of Whangārei.

WST is repairing and restoring buildings and establishing a faith-based residential sanctuary for those who need rest and recovery.

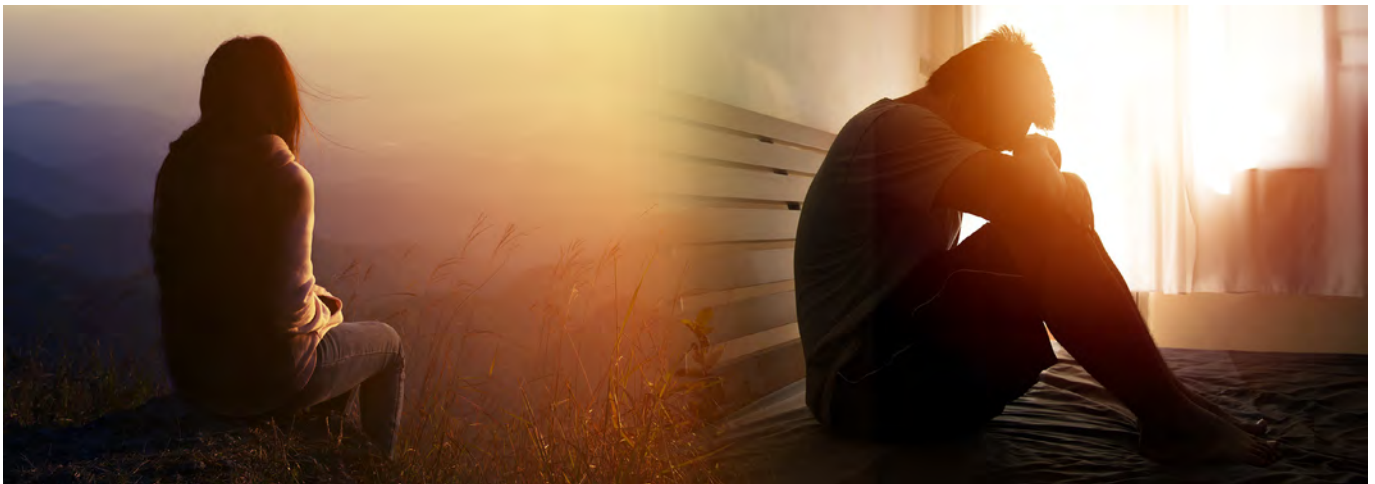
In addition, we are developing a community garden to feed our retreat community.

This holistic retreat where issues of the mind, body, spirit and whanau are addressed ([te whare tapa whā](#)) is urgently needed to help the addicted

and traumatised in Aotearoa New Zealand. This approach brings healing not only to the guest, but also to the wider family (whānau).

This is a big vision. We have no government funding so we need continuous financial partnership and donations with those who can see the urgent need for this facility in Northland.

Would you want a safe haven for your son or daughter, husband or wife, brother or sister, uncle or aunty, niece or nephew... if they were struggling with life issues?



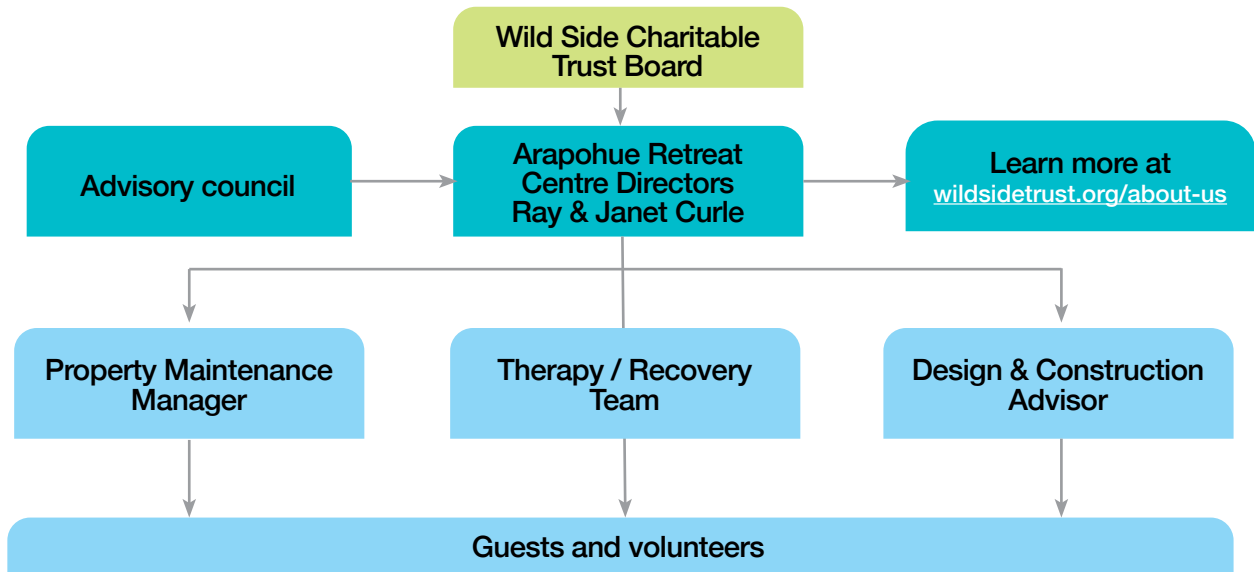
Since December 2020 we've helped many men and women find healing from addiction and trauma to face the future with hope — and be restored to their families and communities.

At the same time we've had volunteers and tradies help us restore 3 accommodation buildings sponsored by generous individuals and organisations.

We now want to make this facility available to more in need, but require financial partnership to help cover operational costs, and repair and restore Okahu House (the mens accommodation) and Crawshaw Lodge.

We don't receive any support from government, and rely on private donations and grants until we are more self-funding.

LEADERSHIP STRUCTURE



Healing & Recovery Programmes



Healing.

WST believes dysfunctional life-controlling issues are primarily driven by pain and trauma. In many cases these are cycles of generational dysfunction, abuse and poverty.

This retreat deals with healing these root causes holistically by providing a loving and caring environment utilising the te whare tapa whā model (body, soul, spirit, whanau).

At the same time we connect guests to the professional addiction or mental health clinicians that they may need.

Work Therapy

Building restoration, garden, orchard, cottage industry, bush maintenance & tracks



Work skills.

Work therapy helps build or restore physical and mental strength, develop new skills, promotes sleep quality, and inner healing/work-life balance.

Residential guests are encouraged to develop a disciplined work routine by helping with maintenance / restoration work around the retreat and eventually, making woodwork and cottage industry products.

Any products made and sold may help to top up cost shortfalls as we work towards developing a self-funding model.

URGENT FUNDING OPPORTUNITIES

You're invited to partner with the Wild Side Charitable Trust to continue development of this new residential healing and recovery centre in Northland.

We've come this far, now we need your help...



The Farmhouse

Directors and guest accommodation



The Cottage (see exterior on front cover)
female guest accommodation



Dargaville House

Property Manager & volunteer accom

Several hundred thousand has been loaned and donated to re-roof, re-plumb, re-wire and restore these three homes which all required substantial repair. The toilet block has also been restored—along with the camp septic system with a brand new AES outflow field.

Can you help with any of these urgent needs?

1.



Crawshaw Lodge wood burner

Lodge wood burner

We need **\$7,500** for chimney repair and a new wood burner to be installed inside the old fireplace before next winter.

Lee Bell, Guest Support sponsorship

Lee has volunteered at Arapohue Retreat for six months now and we desperately need sponsorship to help support her meet her financial needs for another six months. Can you please help sponsor Lee so she can continue to volunteer at Arapohue?

Can you donate to cover 3-months (\$2,338.20) or 6-months (\$4,676.40) or \$180 per week?

2.



Jonny, Property Maintenance Manager

Property Maintenance Manager wages

We currently need \$3,460 per month to help cover the only paid person on staff. This also supports Jonny's wife and family.

Can you donate to cover 3-months (\$10,380) or 6-months (\$20,760)?

Monthly operational costs

We currently need \$3,000 per month to help cover mortgage repayments and overhead shortfalls (power, telecommunications, rates, petrol) and material for building repairs.

Can you donate to cover 3-months (\$9,000) or 6-months (\$18,000)?

3.

3 projects underway now:



Storm cleanup



Okahu House (men's accommodation)



Chicken coup and orchard

Can you donate \$11,500 to cover the digger work for storm cleanup? Or \$14,500 for Okahu House restoration to accommodate more men? Or \$800 for a larger chicken coup to accommodate the growing flock?

HOW WE ARE DIFFERENT

Arapohue Retreat is a not-for-profit residential healing and recovery centre. It is not a rehab.

WST work with other agencies such as Te Whatu Ora, Te Ara Oranga, Te Hā Oranga, Timatanga Hou (Dargaville detox) and Arataki Ministries... and work closely with churches because **TOGETHER, WE HAVE THE ANSWERS.**

There is a major emphasis on learning work skills, work ethic and general life recovery. Many people have lived their entire lives outside of normal society and need intensive help learning how to write a CV, get a driver's licence, car, bank account, ID, insurance, and develop a work ethic.



GOVERNANCE

WST has a solid governance structure including an experienced advisory council and board of trustees. [See here](#)

Arapohue Retreat works with local, qualified mental health personnel to supervise recovery and the Retreat is run by people with lived experience.

We do not seek to be in conflict with any medical or psychiatric practices, any church or its religious doctrines, beliefs or practices. WST works hand-in-hand with any prescribed medicine or psychological treatment; and work closely with Te Whatu Ora (Kaipara Adult Community Mental Health & Addiction Services), Te Ara Oranga and Dargaville Medical Centre for treatment of specific medical or mental health conditions or disorders.

WST recognises the importance of the principles of Te Tiriti o Waitangi, and Māori philosophy towards health (te whare tapa whā); based on a holistic health model seeing health as a four-sided concept representing four basic beliefs of life:

Te Taha Hinengaro (mental health), Te Taha Tinana (physical health), Te Taha Whānau (family health) and Te Taha Wairua (spiritual health).



HOW TO DONATE

Wild Side Charitable Trust Registration No. CC55065

1. Individual Donors (one-off donations)

Please make your tax-deductible donation to the account below and email janet@thewildside.net with your name and donation details for a tax receipt

Direct debit into Wild Side Charitable Trust: 12-3098-0013945-00

2. Corporate / Angel Donors

WST is looking for corporate entities with a heart for social responsibility, angel donors, funding organisations, grants and generous philanthropists to consider making substantial donations to help with the restoration of this new residential healing and recovery centre. There are capital injections required for the rebuilding / restoration / replacement of the existing facilities. Our model does incorporate guests paying a modest board within Work & Income capability.

WST Chairman Ray Curle, and Treasurer Gary Shuttleworth, Shuttleworth Chartered Accountant will be happy to discuss any queries you may have.

Please contact:

Ray p. 09 439 5717 or 027 254 6778 ray@thewildside.net

Gary p. 021 226 5441 gary@shuttleworthca.nz

3. Regular contributors to the ongoing costs of supplementing caring for guests.

If you would like to set up a regular weekly or monthly automatic payment (or a one-off donation), please make your tax-deductible donation to the account below and email janet@thewildside.net with your name and donation details for a tax receipt.

Direct debit into Wild Side Charitable Trust: 12-3098-0013945-00

APPX 1 ENDORSEMENT

KAIPARA DISTRICT COUNCIL

01 July 2019

To whom it may concern**Letter of endorsement - Wild Side Charitable Trust for the Arapohue Healing & Recovery Centre**

I welcome the enterprise of our Kaipara people, especially when they're endeavouring to enhance the well-being of Kiwis.

The Wild Side Charitable Trust aims to do this by supporting people through their addiction to be well, live well, and contribute back to society.

To fulfil their vision the Wild Side Charitable Trust needs to purchase and establish a residential rehabilitation centre on a designated 22 acre site near Dargaville, calling it the Arapohue Healing & Recovery Centre. This is a long term project which requires funding to begin.

I have personally know Janet Curle all my life, growing up in the Dargaville area. It's lovely that Janet has chosen to come back with this venture to the Kaipara district.

Our Council's vision is 'thriving communities working together' and I feel the Wild Side Charitable Trust will contribute greatly to this, will enrich whanaungatanga, and will strengthen our Kaipara mana.

Yours faithfully



Dr Jason Smith
Mayor



Kaipara te Orangawhi
**KAIPARA
DISTRICT**
Two Oceans Two Harbours

42 Hokianga Road
Private Bag 1001,
Dargaville 0340 Northland,
New Zealand

p 09 439 3123

p 0800 727 059

f 09 439 6756

e council@kaipara.govt.nz

www.kaipara.govt.nz

APPX 2 ENDORSEMENT**Mauri Ora Ki Ngāti Whatua Charitable Trust** *(Est: 2004)*

23rd June 2019

To whom it may concern,

Endorsement letter – **Wild Side Charitable Trust (WST)**

We write this letter because we are enthused about the opportunity that the Wild Side Charitable Trust is offering to the community of Kaipara and beyond.

Wide Side Trust is an organisation dedicated to the wellbeing of all peoples especially those affected by Drugs & Alcohol. The success of the organisation and their development is dependent on the financial support of corporations and private sponsors to which we give our support.

Puutake

Mauri Ora Ki Ngāti Whatua is a non-profit organisation that engage with whole communities and provide cultural, sports and recreational activities to whanau, hapu, Iwi and their respective communities.

For the purpose of this “Endorsement” Mauri Ora ki Ngati Whatua Charitable Trust has agreed to support the “Wild Side Trust” for the purpose of providing Matāuranga Māori guided under the principles of Te Whare Tāpu Wha” and the development of an effective Healing & Recovery Center to be based at Arapohue, Dargaville.

Please feel free to contact the writer if you require further clarification.

Ngā mihi,

Grace Le Gros
Director
Mauri Ora ki Ngāti Whatua Charitable Trust
0275696889
gracelegros8@gmail.com

APPX 3 ENDORSEMENT

18 July 2019



TE URI O HAU
SETTLEMENT TRUST

To Whom It May Concern

LETTER OF SUPPORT

This letter of support is intended for the purpose of giving tautoko to the Retreat application by Ray and Janet Curle. I have known Janet all of her life and also am aware of the excellent work her and her husband have been involved in over the years, supporting people into recovery and offering advice and support to those in need.

Janet and Ray are well known and respected community members. I wish them well in this venture as this is a facility with a difference and unfortunately these types of facilities are required within communities today. The location is perfect, situated amongst the ngahere and within the Kaipara and rohe of Te Uri o Hau / Te Roroa, offering a perfect setting to recuperate and restore ones wairua.

Thank you Janet and Ray for the vision of restoring ones mana.

Nga mihi mahana ki a koe

A handwritten signature in black ink, appearing to read 'Georgina Connelly'. The signature is written in a cursive style with a large initial 'G'.

na, **Georgina Connelly**
Chair
Te Uri o Hau Settlement Trust